

1

Hand 1: ♠98765, ♥53, ♦Q10975, ♣K. Opponent: ♠AJ4, ♥J764, ♦6, ♣AJ1053. Board: N(♠), W, E, S. ♠K103, ♥AK98, ♦A84, ♣987. ♠Q2, ♥Q102, ♦KJ32, ♣Q642.

Av: NS=-210. Table with columns: N-S, E-W, Contract, N-S, E-W, IMP. Rows 1-13.

2

Hand 2: ♠5, ♥AK854, ♦AJ3, ♣10653. Opponent: ♠K, ♥J1093, ♦KQ108, ♣AJ92. Board: N(♠), W, E, S. ♠AJ10976432, ♥Q6, ♦52, ♣. ♠Q8, ♥72, ♦9764, ♣KQ874.

Av: NS=-310. Table with columns: N-S, E-W, Contract, N-S, E-W, IMP. Rows 1-13.

3

Hand 3: ♠92, ♥3, ♦AQJ10742, ♣Q73. Opponent: ♠K8, ♥AQ874, ♦96, ♣AK108. Board: N(♠), W, E, S. ♠QJ1063, ♥J1052, ♦3, ♣J96. ♠A754, ♥K96, ♦K85, ♣542.

Av: NS=-320. Table with columns: N-S, E-W, Contract, N-S, E-W, IMP. Rows 1-13.

4

Hand 4: ♠J3, ♥A104, ♦Q84, ♣QJ542. Opponent: ♠2, ♥K532, ♦AJ9652, ♣106. Board: N(♠), W, E, S. ♠KQ654, ♥Q, ♦3, ♣AK9873. ♠A10987, ♥J9876, ♦K107, ♣.

Av: NS=+110. Table with columns: N-S, E-W, Contract, N-S, E-W, IMP. Rows 1-11.

5

Hand 5: ♠1052, ♥J92, ♦95432, ♣K6. Opponent: ♠AK93, ♥K864, ♦K, ♣A532. Board: N(♠), W, E, S. ♠J74, ♥A1073, ♦AQJ86, ♣7. ♠Q86, ♥Q5, ♦107, ♣QJ10984.

Av: NS=-340. Table with columns: N-S, E-W, Contract, N-S, E-W, IMP. Rows 1-11.

6

Hand 6: ♠AK53, ♥AQ103, ♦Q5, ♣J73. Opponent: ♠Q109, ♥J75, ♦987, ♣10842. Board: N(♠), W, E, S. ♠J87, ♥K98, ♦J62, ♣AQ95. ♠642, ♥642, ♦AK1043, ♣K6.

Av: NS=+340. Table with columns: N-S, E-W, Contract, N-S, E-W, IMP. Rows 1-11.

7

Hand 7: ♠J64, ♥95, ♦109765, ♣J63. Opponent: ♠A952, ♥6, ♦AJ84, ♣Q1082. Board: N(♠), W, E, S. ♠Q107, ♥KQJ1083, ♦3, ♣K54. ♠K83, ♥A742, ♦KQ2, ♣A97.

Av: NS=-180. Table with columns: N-S, E-W, Contract, N-S, E-W, IMP. Rows 1-13.

8

Hand 8: ♠A64, ♥87, ♦AJ872, ♣973. Opponent: ♠KQJ8, ♥Q1032, ♦K10, ♣654. Board: N(♠), W, E, S. ♠10752, ♥A965, ♦Q5, ♣AQ2. ♠93, ♥KJ4, ♦9643, ♣KJ108.

Av: NS=+60. Table with columns: N-S, E-W, Contract, N-S, E-W, IMP. Rows 1-13.

9

Hand 9: ♠93, ♥A9532, ♦A1082, ♣104. Opponent: ♠AK875, ♥K1074, ♦6, ♣AK8. Board: N(♠), W, E, S. ♠QJ642, ♥J6, ♦9743, ♣73. ♠10, ♥Q8, ♦KQJ5, ♣QJ9652.

Av: NS=-640. Table with columns: N-S, E-W, Contract, N-S, E-W, IMP. Rows 1-13.

10

Hand 10: ♠QJ843, ♥3, ♦932, ♣QJ105. Opponent: ♠A10, ♥A842, ♦QJ7, ♣6432. Board: N(♠), W, E, S. ♠K96, ♥KQ975, ♦A108, ♣97. ♠752, ♥J106, ♦K654, ♣AK8.

Av: NS=-400. Table with columns: N-S, E-W, Contract, N-S, E-W, IMP. Rows 2-13.

11

Hand 11: ♠753, ♥A1064, ♦K92, ♣QJ5. Opponent: ♠AJ82, ♥K7, ♦Q104, ♣A932. Board: N(♠), W, E, S. ♠KQ94, ♥J85, ♦J6, ♣10874. ♠106, ♥Q932, ♦A8753, ♣K6.

Av: NS=-30. Table with columns: N-S, E-W, Contract, N-S, E-W, IMP. Rows 2-13.

12

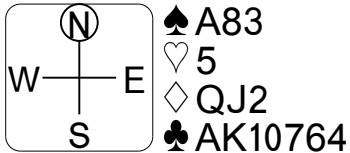
Hand 12: ♠85, ♥J1032, ♦64, ♣AQ1092. Opponent: ♠KQ9, ♥Q6, ♦AQ983, ♣754. Board: N(♠), W, E, S. ♠AJ432, ♥54, ♦1075, ♣J86. ♠1076, ♥AK987, ♦KJ2, ♣K3.

Av: NS=+70. Table with columns: N-S, E-W, Contract, N-S, E-W, IMP. Rows 2-13.

# 13

♠ K62  
♥ AK1064  
♦ 95  
♣ QJ5

♠ J5  
♥ J982  
♦ K874  
♣ 983



♠ Q10974  
♥ Q73  
♦ A1063  
♣ 2

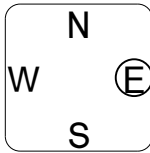
Av: NS=+30

N-S	E-W	Contract	N-S	E-W	IMP
1	5	4H N-1		100	-4
3	7	1NT N-1		100	-4
6	2	3H N 4	170		4
8	4	3H N 4	170		4
11	13	3H N-1		100	-4
14	12	3H N 3	140		3

# 14

♠ 6542  
♥ AQ3  
♦ J53  
♣ A32

♠ A  
♥ 982  
♦ A109742  
♣ J105



♠ 10973  
♥ KJ754  
♦ KQ86  
♣ KQ86

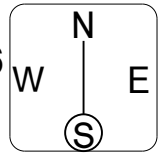
Av: NS=+40

N-S	E-W	Contract	N-S	E-W	IMP
1	5	4Hx E-1		100	2
3	7	2D W 2		90	-4
6	2	Passout			-1
8	4	2S N 3	140		3
11	13	2D W-1		50	0
14	12	Passout			-1

# 15

♠ KQJ8  
♥ AQ5  
♦ 93  
♣ KQ102

♠ 732  
♥ KJ106  
♦ A765  
♣ A3



♠ A106  
♥ 842  
♦ KQ1042  
♣ J9

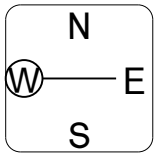
Av: NS=+50

N-S	E-W	Contract	N-S	E-W	IMP
1	5	3D W-1		50	0
3	7	1NT N-1		100	-4
6	2	3D W-1		50	0
8	4	3D W-1		50	0
11	13	4D W-1		50	0
14	12	4D W-1		50	0

# 16

♠ J954  
♥ AJ2  
♦ 654  
♣ KJ8

♠ K1087  
♥ 10765  
♦ Q1073  
♣ A



♠ Q32  
♥ K83  
♦ KJ82  
♣ 1092

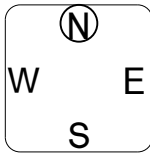
Av: NS=+110

N-S	E-W	Contract	N-S	E-W	IMP
3	9	3D E 3		110	-6
6	14	1NT N 3	150		1
7	11	3C S 3	110		0
10	4	2C S 3	110		0
12	8	1NT S 2	120		0
13	5	2C S 3	110		0

# 17

♠ Q5  
♥ QJ1032  
♦ AKQ73  
♣ J

♠ A764  
♥ K76  
♦ J98  
♣ Q62



♠ K9832  
♥ 9  
♦ 10  
♣ 1098754

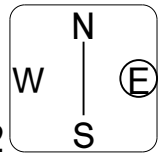
Av: NS=+310

N-S	E-W	Contract	N-S	E-W	IMP
3	9	4H N 5	450		4
6	14	6H N-1		50	-8
7	11	4H N 4	420		3
10	4	4H N 4	420		3
12	8	4H N 5	450		4
13	5	5H N-1		50	-8

# 18

♠ A10  
♥ K9865  
♦ 62  
♣ AJ106

♠ 8432  
♥ A43  
♦ 94  
♣ K952



♠ Q7  
♥ Q1072  
♦ QJ107  
♣ Q87

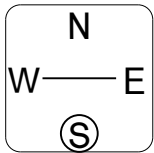
Av: NS=+610

N-S	E-W	Contract	N-S	E-W	IMP
3	9	3NT S 3	600		0
6	14	3NT N 3	600		0
7	11	3NT S-1		100	-12
10	4	3NT N 3	600		0
12	8	3NT N 5	660		2
13	5	3NT N 4	630		1

# 19

♠ QJ9843  
♥ 84  
♦ 87  
♣ A87

♠ K  
♥ KQ1095  
♦ K643  
♣ Q104



♠ A107  
♥ A32  
♦ AJ5  
♣ J932

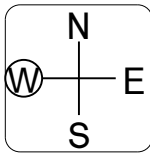
Av: NS=-630

N-S	E-W	Contract	N-S	E-W	IMP
2	12	4H W 4		620	0
5	8	4H W 4		620	0
7	6	4H W 4		620	0
9	13	4H W 4		620	0
11	1	4H W 5		650	-1
14	10	4Sx N-4		800	-5

# 20

♠ A8  
♥ AQ10  
♦ AJ53  
♣ J753

♠ QJ64  
♥ K87  
♦ K982  
♣ 98



♠ K9532  
♥ 653  
♦ Q64  
♣ 64

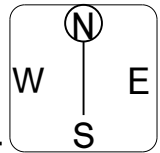
Av: NS=+630

N-S	E-W	Contract	N-S	E-W	IMP
2	12	3NT N 4	630		0
5	8	3NT N 5	660		1
7	6	3NT N 4	630		0
9	13	3NT N 4	630		0
11	1	3NT N 4	630		0
14	10	3NT N 4	630		0

# 21

♠ J76  
♥ A3  
♦ K98642  
♣ 87

♠ 5  
♥ Q106  
♦ A75  
♣ AKQ954



♠ K92  
♥ KJ8754  
♦ Q10  
♣ 103

Av: NS=-290

N-S	E-W	Contract	N-S	E-W	IMP
2	12	5H E-1		50	8
5	8	4H E 5		450	-4
7	6	4H E 4		420	-4
9	13	4C W 5		150	4
11	1	4H E 4		420	-4
14	10	4C W 5		150	4