

1

Hand 1: ♠KQ53, ♥A1085, ♦Q, ♣10764. Opponent: ♠109862, ♥63, ♦AJ1076, ♣A. Hand 2: ♠A74, ♥Q72, ♦K3, ♣KJ853.

Table for Hand 1: Av: NS=-80. Columns: N-S, E-W, Contract, N-S, E-W, IMP. Rows: 1 4 1NT N 3 150 6, 3 2 3NT S-3 150 -2, 8 14 3NT N-3 150 -2, 9 11 1NT S-1 50 1, 12 10 3NT S-1 50 1, 13 7 2NT S-1 50 1.

2

Hand 2: ♠KJ1065, ♥64, ♦, ♣A108763. Opponent: ♠932, ♥J872, ♦J1085, ♣K4. Hand 3: ♠Q7, ♥AK109, ♦Q9642, ♣J9. Hand 4: ♠A84, ♥Q53, ♦AK73, ♣Q52.

Table for Hand 2: Av: NS=+520. Columns: N-S, E-W, Contract, N-S, E-W, IMP. Rows: 1 4 4S S 4 620 3, 3 2 4S N 4 620 3, 8 14 4S S 5 650 4, 9 11 3S S 5 200 -8, 12 10 4S S-1 100 -12, 13 7 4S S 4 620 3.

3

Hand 3: ♠AQJ32, ♥AQ85, ♦87, ♣52. Opponent: ♠9764, ♥32, ♦Q652, ♣AJ10. Hand 4: ♠K1085, ♥K1074, ♦J1043, ♣7. Hand 5: ♠J96, ♥AK9, ♣KQ98643.

Table for Hand 3: Av: NS=+60. Columns: N-S, E-W, Contract, N-S, E-W, IMP. Rows: 1 4 3NT S-1 50 -3, 3 2 3NT S-1 50 -3, 8 14 3NT S-1 50 -3, 9 11 5C S 5 400 8, 12 10 3NT N 3 400 8, 13 7 3NT S-2 100 -4.

4

Hand 4: ♠AQJ, ♥KQ5, ♦KJ7, ♣QJ94. Opponent: ♠753, ♥87632, ♦10864, ♣10. Hand 5: ♠962, ♥94, ♦AQ5, ♣A8765. Hand 6: ♠K1084, ♥AJ10, ♦932, ♣K32.

Table for Hand 4: Av: NS=+660. Columns: N-S, E-W, Contract, N-S, E-W, IMP. Rows: 1 7 3NT N 5 660 0, 4 12 3NT N 5 660 0, 5 9 3NT N 5 660 0, 8 2 3NT N 5 660 0, 10 6 3NT N 5 660 0, 11 3 3NT N 5 660 0.

5

Hand 5: ♠105, ♥Q8, ♦J6432, ♣AJ107. Opponent: ♠J63, ♥9652, ♦1087, ♣942. Hand 6: ♠A7, ♥K10743, ♦AKQ9, ♣Q6. Hand 7: ♠KQ9842, ♥AJ, ♦5, ♣K853.

Table for Hand 5: Av: NS=+140. Columns: N-S, E-W, Contract, N-S, E-W, IMP. Rows: 1 7 3H W-1 50 -3, 4 12 3S S-1 100 -6, 5 9 2S S 4 170 1, 8 2 3S S 4 170 1, 10 6 3S S 5 200 2, 11 3 2S S 4 170 1.

6

Hand 6: ♠8642, ♥Q3, ♦K963, ♣J74. Opponent: ♠A73, ♥A105, ♦Q1072, ♣A85. Hand 7: ♠J9, ♥9764, ♦A4, ♣KQ1032. Hand 8: ♠KQ105, ♥KJ82, ♦J85, ♣96.

Table for Hand 6: Av: NS=-180. Columns: N-S, E-W, Contract, N-S, E-W, IMP. Rows: 1 7 1NT E 1 90 3, 4 12 1NT E 3 150 1, 5 9 1NT E 4 180 0, 8 2 1NT E 4 180 0, 10 6 1NT E 5 210 -1, 11 3 1NT E 5 210 -1.

7

Hand 7: ♠AKJ107, ♥10986, ♦A, ♣1043. Opponent: ♠Q5, ♥AQJ2, ♦Q7432, ♣A8. Hand 8: ♠9642, ♥74, ♦1095, ♣QJ95. Hand 9: ♠83, ♥K53, ♦KJ86, ♣K762.

Table for Hand 7: Av: NS=+140. Columns: N-S, E-W, Contract, N-S, E-W, IMP. Rows: 1 14 2S N 2 110 -1, 3 6 1NT S 1 90 -2, 5 4 2S N 4 170 1, 7 9 2NT S 3 150 0, 10 8 2NT S 3 150 0, 13 2 2S N 3 140 0.

8

Hand 8: ♠A92, ♥, ♦987654, ♣AK95. Opponent: ♠K1074, ♥K7, ♦KQ103, ♣J108. Hand 9: ♠AQJ652, ♥J5, ♦A, ♣Q732. Hand 10: ♠983, ♥Q108643, ♦J2, ♣64.

Table for Hand 8: Av: NS=-70. Columns: N-S, E-W, Contract, N-S, E-W, IMP. Rows: 1 14 4S W-1 50 3, 3 6 4S W-1 50 3, 5 4 4S W-1 50 3, 7 9 4S W 5 450 -9, 10 8 4S W 4 420 -8, 13 2 4S W-1 50 3.

9

Hand 9: ♠QJ6, ♥KQ5, ♦K7, ♣AJ1095. Opponent: ♠K104, ♥J1064, ♦A942, ♣Q2. Hand 10: ♠A87, ♥A32, ♦Q105, ♣8763. Hand 11: ♠9532, ♥987, ♦J863, ♣K4.

Table for Hand 9: Av: NS=+20. Columns: N-S, E-W, Contract, N-S, E-W, IMP. Rows: 1 14 1NT N 1 90 2, 3 6 1NT N 2 120 3, 5 4 1NT N-1 50 -2, 7 9 1NT N 1 90 2, 10 8 1NT N-1 50 -2, 13 2 1NT N-1 50 -2.

10

Hand 10: ♠K752, ♥982, ♦93, ♣AK82. Opponent: ♠AKQ64, ♥, ♦10876, ♣J1064. Hand 11: ♠643, ♥J1073, ♦Q2, ♣9753. Hand 12: ♠AQJ1098, ♥5, ♦AKJ54, ♣Q.

Table for Hand 10: Av: NS=+1060. Columns: N-S, E-W, Contract, N-S, E-W, IMP. Rows: 2 10 4S S 6 680 -9, 4 14 6S S 6 1430 9, 5 11 6S S 7 1460 9, 9 1 6S N 6 1430 9, 12 6 4S S 7 710 -8, 13 3 5S N 6 680 -9.

11

Hand 11: ♠KJ543, ♥8752, ♦43, ♣J5. Opponent: ♠986, ♥A4, ♦AK9852, ♣A3. Hand 12: ♠AQ7, ♥KQ1093, ♦J, ♣K984. Hand 13: ♠102, ♥J6, ♦Q1076, ♣Q10762.

Table for Hand 11: Av: NS=-460. Columns: N-S, E-W, Contract, N-S, E-W, IMP. Rows: 2 10 3NT E 4 430 1, 4 14 3NT W 6 490 -1, 5 11 3NT W 4 430 1, 9 1 3NT W 6 490 -1, 12 6 3NT W 5 460 0, 13 3 3NT W 5 460 0.

12

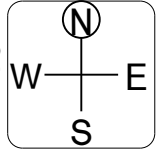
Hand 12: ♠4, ♥872, ♦KQ1094, ♣Q832. Opponent: ♠A, ♥AQ5, ♦J7632, ♣AK96. Hand 13: ♠87653, ♥KJ93, ♦A, ♣1074. Hand 14: ♠KQJ1092, ♥1064, ♦85, ♣J5.

Table for Hand 12: Av: NS=-150. Columns: N-S, E-W, Contract, N-S, E-W, IMP. Rows: 2 10 3NT S-2 200 -2, 4 14 3C E 5 150 0, 5 11 3C E 3 110 1, 9 1 3NT E 3 400 -6, 12 6 3C E 4 130 1, 13 3 3NT W-2 100 6.

13

♠AJ10764
♥J86
♦K
♣K53
♠KQ8
♥AK7
♦1093
♣J976

♠952
♥95432
♦Q86
♣84



♠3
♥Q10
♦AJ7542
♣AQ102

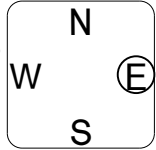
Av: NS=+440

N-S	E-W	Contract	N-S	E-W	IMP
1	5	4S N-1		100	-11
3	7	4S N 4	620		5
6	2	4S N 4	620		5
8	4	4S N-2		200	-12
11	13	4S N 4	620		5
14	12	4S N 4	620		5

14

♠AQ4
♥Q
♦A986
♣J10965
♠82
♥A10864
♦10742
♣82

♠K5
♥KJ532
♦Q3
♣K743



♠J109763
♥97
♦KJ5
♣AQ

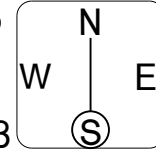
Av: NS=0

N-S	E-W	Contract	N-S	E-W	IMP
1	5	3NT E-1		50	2
3	7	2NT W-1		50	2
6	2	3S E 3		140	-4
8	4	3NT E-1		50	2
11	13	3NT W-2		100	3
14	12	3S W 3		140	-4

15

♠J762
♥Q973
♦K102
♣K10
♠1084
♥J54
♦9653
♣AQ5

♠AQ95
♥10
♦QJ4
♣J8743



♠K3
♥AK862
♦A87
♣962

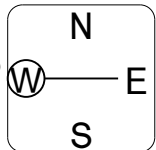
Av: NS=-90

N-S	E-W	Contract	N-S	E-W	IMP
1	5	1NT E 1		90	0
3	7	1NT E 1		90	0
6	2	1NT E 1		90	0
8	4	1NT E 1		90	0
11	13	1NT E 1		90	0
14	12	1NT E 1		90	0

16

♠J875
♥98
♦A83
♣Q1065
♠A10
♥Q1062
♦KJ102
♣742

♠K942
♥KJ753
♦Q6
♣K8



♠Q63
♥A4
♦9754
♣AJ93

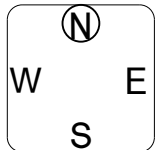
Av: NS=+50

N-S	E-W	Contract	N-S	E-W	IMP
3	9	3C W-1		100	2
6	14	3NT E-2		200	4
7	11	2NT E 2		120	-5
10	4	2NT W 3		150	-5
12	8	3C W-1		100	2
13	5	2NT E-1		100	2

17

♠AK83
♥6
♦A105
♣AJ1093
♠QJ762
♥952
♦2
♣K742

♠4
♥Q87
♦KQ87643
♣Q5



♠1095
♥AKJ1043
♦J9
♣86

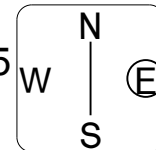
Av: NS=+460

N-S	E-W	Contract	N-S	E-W	IMP
3	9	5Hx E-3		500	1
6	14	5C N 6	420		-1
7	11	4H E-3		150	-7
10	4	4S S 6	480		1
12	8	4S N 6	480		1
13	5	4S S 5	450		0

18

♠QJ
♥AK82
♦K1098
♣J43
♠10742
♥Q
♦J73
♣A9876

♠AK98
♥J10965
♦4
♣Q102



♠653
♥743
♦AQ652
♣K5

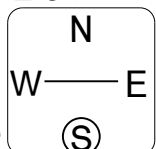
Av: NS=+50

N-S	E-W	Contract	N-S	E-W	IMP
3	9	2H W-2		100	2
6	14	1NT N 1		90	1
7	11	2H E 2		110	-4
10	4	1NT N-1		100	-4
12	8	1NT N 2		120	2
13	5	1NT N 1		90	1

19

♠97654
♥A102
♦942
♣93
♠102
♥Q653
♦KQ107
♣J74

♠AK8
♥J974
♦A3
♣A652



♠QJ3
♥K8
♦J865
♣KQ108

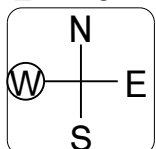
Av: NS=-610

N-S	E-W	Contract	N-S	E-W	IMP
2	12	3NT W 3		600	0
5	8	3NT W 3		600	0
7	6	3NT W-2		200	13
9	13	3NT W 3		600	0
11	1	3NT E 4		630	-1
14	10	3NT W 4		630	-1

20

♠Q84
♥KJ2
♦1087
♣AK94
♠A96
♥4
♦KQ9432
♣QJ2

♠7
♥A963
♦AJ65
♣10863



♠KJ10532
♥Q10875
♦
♣75

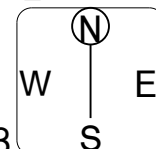
Av: NS=-100

N-S	E-W	Contract	N-S	E-W	IMP
2	12	3NT N-2		200	-3
5	8	4D S 4		130	6
7	6	3NT S-2		200	-3
9	13	4H W-1		100	5
11	1	5D S-1		100	0
14	10	3NT N-2		200	-3

21

♠AQ10
♥J643
♦AQ104
♣K4
♠KJ854
♥85
♦97
♣Q1098

♠62
♥10972
♦65
♣AJ763



♠973
♥AKQ
♦KJ832
♣52

Av: NS=+140

N-S	E-W	Contract	N-S	E-W	IMP
2	12	3S N 3	140		0
5	8	2S N 4	170		1
7	6	2S N 3	140		0
9	13	2S N 3	140		0
11	1	3D E-1		50	-3
14	10	2S N 3	140		0