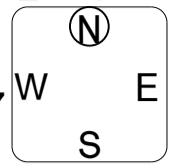


1

♠QJ875
♥Q1032
♦52
♣106

♠A10
♥J984
♦K10987
♣AK



♠9643
♥5
♦AQ63
♣9873

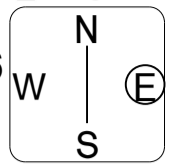
♠K2
♥AK76
♦J4
♣QJ542

Table with 6 columns: NS, EW, Contract, N-S, E-W, MP. Rows 1-10.

2

♠A98
♥KJ83
♦Q7
♣10972

♠K632
♥A1076
♦A92
♣Q8



♠QJ74
♥Q9
♦K853
♣A43

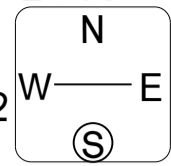
♠105
♥542
♦J1064
♣KJ65

Table with 6 columns: NS, EW, Contract, N-S, E-W, MP. Rows 1-10.

3

♠K5
♥AJ
♦Q1087
♣J9874

♠986
♥K65
♦KJ632
♣52



♠AJ32
♥1032
♦95
♣AQ103

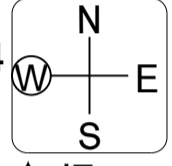
♠Q1074
♥Q9874
♦A4
♣K6

Table with 6 columns: NS, EW, Contract, N-S, E-W, MP. Rows 1-10.

4

♠KQ10854
♥63
♦Q9863
♣

♠A92
♥KQ54
♦J10
♣K653



♠63
♥J10872
♦K52
♣982

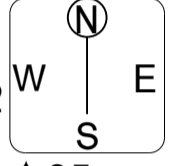
♠J7
♥A9
♦A74
♣AQJ1074

Table with 6 columns: NS, EW, Contract, N-S, E-W, MP. Rows 2-10.

5

♠AKJ1042
♥43
♦AJ107
♣6

♠Q76
♥A72
♦8542
♣A102



♠83
♥KQ1086
♦K63
♣J97

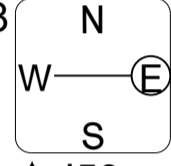
♠95
♥J95
♦Q9
♣KQ8543

Table with 6 columns: NS, EW, Contract, N-S, E-W, MP. Rows 2-10.

6

♠63
♥K
♦A9862
♣AJ762

♠AQ98
♥AJ32
♦K4
♣KQ9



♠K1074
♥Q54
♦QJ5
♣1083

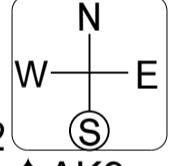
♠J52
♥109876
♦1073
♣54

Table with 6 columns: NS, EW, Contract, N-S, E-W, MP. Rows 2-10.

7

♠J105
♥KJ9
♦Q4
♣KQJ74

♠Q82
♥AQ7
♦A93
♣9652



♠7643
♥6
♦J762
♣A1083

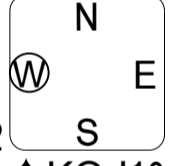
♠AK9
♥1085432
♦K1085
♣

Table with 6 columns: NS, EW, Contract, N-S, E-W, MP. Rows 3-10.

8

♠953
♥AQ9
♦A1084
♣KJ4

♠864
♥1062
♦Q6
♣A10962



♠A72
♥K85
♦KJ75
♣Q75

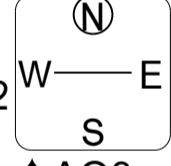
♠KQJ10
♥J743
♦932
♣83

Table with 6 columns: NS, EW, Contract, N-S, E-W, MP. Rows 3-10.

9

♠KJ654
♥982
♦10
♣QJ107

♠987
♥105
♦K8432
♣K92



♠102
♥AKJ74
♦Q75
♣654

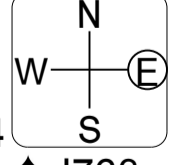
♠AQ3
♥Q63
♦AJ96
♣A83

Table with 6 columns: NS, EW, Contract, N-S, E-W, MP. Rows 3-10.

10

♠K852
♥A
♦Q973
♣8653

♠Q94
♥432
♦1065
♣AJ74



♠A10
♥QJ9865
♦K82
♣KQ

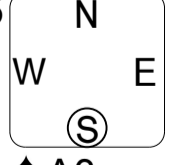
♠J763
♥K107
♦AJ4
♣1092

Table with 6 columns: NS, EW, Contract, N-S, E-W, MP. Rows 1-10.

11

♠93
♥AJ63
♦KQJ10
♣Q53

♠Q8765
♥9542
♦72
♣K2



♠KJ104
♥Q
♦95
♣AJ9874

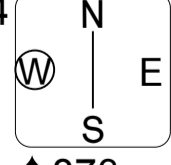
♠A2
♥K1087
♦A8643
♣106

Table with 6 columns: NS, EW, Contract, N-S, E-W, MP. Rows 1-10.

12

♠62
♥K96
♦J982
♣A1083

♠AKQ104
♥J8
♦73
♣KQ64



♠J95
♥AQ105
♦AK64
♣92

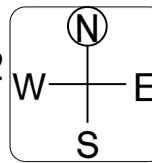
♠873
♥7432
♦Q105
♣J75

Table with 6 columns: NS, EW, Contract, N-S, E-W, MP. Rows 1-10.

13

♠ Q943
♥ KQ43
♦ AQ76
♣ 3

♠ 10
♥ AJ109752
♦ 83
♣ AK6



♠ 6
♥ 6
♦ J1054
♣ Q1098754

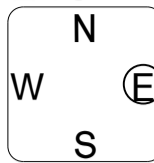
♠ AKJ8752
♥ 8
♦ K92
♣ J2

NS	EW	Contract	N-S	E-W	MP
2	7	4S	S 5	650	2.5
5	4	4S	S 5	650	2.5
8	1	4S	S 5	650	2.5
9	6	4S	S 4	620	0
10	3	4S	S 5	650	2.5

14

♠ AK753
♥ Q10974
♦ Q
♣ J8

♠ J9
♥ K
♦ AK10754
♣ 10954



♠ Q102
♥ A65
♦ 98
♣ AK762

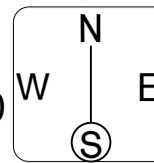
♠ 864
♥ J832
♦ J632
♣ Q3

NS	EW	Contract	N-S	E-W	MP
2	7	3S	N-1	50	4
5	4	2NT	E 4	180	2
8	1	2NT	E 3	150	3
9	6	3S	N-4	200	1
10	3	3NT	E 4	430	0

15

♠ 9864
♥ J109
♦ Q753
♣ 76

♠ K32
♥ AQ53
♦ AKJ10
♣ A5



♠ A107
♥ 842
♦ 984
♣ KQ84

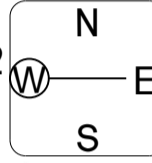
♠ QJ5
♥ K76
♦ 62
♣ J10932

NS	EW	Contract	N-S	E-W	MP
2	7	3NT	E 4	430	1.5
5	4	3NT	W 5	460	0
8	1	6NT	W-3	150	4
9	6	3NT	W 3	400	3
10	3	3NT	W 4	430	1.5

16

♠ J64
♥ AJ83
♦ 952
♣ KJ6

♠ A87
♥ 109652
♦ J84
♣ A9



♠ KQ1095
♥ K4
♦ K107
♣ Q83

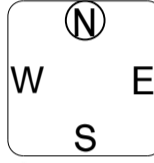
♠ 32
♥ Q7
♦ AQ63
♣ 107542

NS	EW	Contract	N-S	E-W	MP
3	1	3S	E-1	100	4
6	5	2S	E 3	140	1.5
8	2	2S	E 3	140	1.5
9	7	2S	E 3	140	1.5
10	4	3S	E 3	140	1.5

17

♠ 102
♥ J82
♦ K9762
♣ Q74

♠ AJ8753
♥ 63
♦ 108
♣ J105



♠ Q6
♥ K10975
♦ AJ3
♣ A93

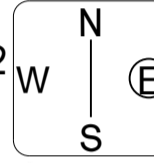
♠ K94
♥ AQ4
♦ Q54
♣ K862

NS	EW	Contract	N-S	E-W	MP
3	1	2S	W 3	140	0.5
6	5	2S	W 2	110	2.5
8	2	2H	E 2	110	2.5
9	7	2H	E-1	50	4
10	4	2S	W 3	140	0.5

18

♠ A1096
♥ Q763
♦ K943
♣ 3

♠ K432
♥ K1042
♦ 76
♣ J104



♠ Q5
♥ A8
♦ 105
♣ A987652

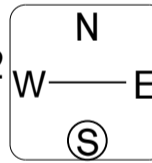
♠ J87
♥ J95
♦ AQJ82
♣ KQ

NS	EW	Contract	N-S	E-W	MP
3	1	4H	N-2	200	0
6	5	3D	S-1	100	2.5
8	2	3D	S-1	100	2.5
9	7	1NT	S 3	150	4
10	4	3C	E 3	110	1

19

♠ AKQ83
♥ K7
♦ QJ732
♣ 9

♠ J42
♥ AQ862
♦ AK98
♣ 2



♠ 107
♥ J54
♦ 5
♣ AKQJ1084

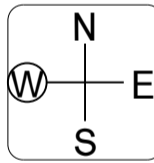
♠ 965
♥ 1093
♦ 1064
♣ 7653

NS	EW	Contract	N-S	E-W	MP
1	9	5H	W-2	200	4
3	8	4H	W 4	620	0
4	2	4Sx	N-1	100	3
7	6	1NT	N-4	200	1
10	5	5S	N-3	150	2

20

♠ 9
♥ J109
♦ AKQJ97
♣ 1086

♠ A10653
♥ K65
♦ 85
♣ AQ5



♠ K874
♥ AQ82
♦ 32
♣ 732

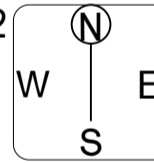
♠ QJ2
♥ 743
♦ 1064
♣ KJ94

NS	EW	Contract	N-S	E-W	MP
1	9	4S	W-1	100	4
3	8	2S	W 4	170	0.5
4	2	3S	W 3	140	2
7	6	Passout			3
10	5	3S	W 4	170	0.5

21

♠ 65
♥ KQ
♦ A1094
♣ 109763

♠ Q432
♥ 53
♦ J865
♣ Q84



♠ KJ109
♥ AJ74
♦
♣ AKJ52

♠ A87
♥ 109862
♦ KQ732
♣

NS	EW	Contract	N-S	E-W	MP
1	9	5Dx	N-1	200	0
3	8	1C	E 1	70	3
4	2	2S	E 4	170	1
7	6	1C	E 4	130	2
10	5	1H	S 1	80	4