

1

♠ 2
♥ KQJ
♦ 92
♣ KQJ10873

♠ AJ6
♥ A975
♦ A1064
♣ A6

♠ K10753
♥ 86
♦ QJ853
♣ 9

♠ Q984
♥ 10432
♦ K7
♣ 542

Av: NS=-290

NS	EW	Contract	N-S	E-W	IMP
1	3	4S E 4		420	-4
3	1	3D E 6		170	3
4	8	4S E 5		450	-4
5	7	4D W-1	50		8
7	5	4S E 4		420	-4
8	4	3D E 4		130	4

2

♠ Q95
♥ 10542
♦ AKJ2
♣ AJ

♠ 10762
♥ Q
♦ 107654
♣ K93

♠ KJ83
♥ J863
♦ 9
♣ Q1042

♠ A4
♥ AK97
♦ Q83
♣ 8765

Av: NS=+440

NS	EW	Contract	N-S	E-W	IMP
1	3	4H N 5	650		5
3	1	4H N 4	620		5
4	8	4H N 4	620		5
5	7	4H N-2		200	-12
7	5	4H N-1		100	-11
8	4	4H N 4	620		5

3

♠ QJ1053
♥ 9873
♦ 32
♣ AK

♠ K874
♥ J
♦ A874
♣ 10652

♠ A9
♥ KQ1054
♦ Q106
♣ Q93

♠ 62
♥ A62
♦ KJ95
♣ J874

Av: NS=-50

NS	EW	Contract	N-S	E-W	IMP
1	3	2H E-1	100		4
3	1	2S N-1		50	0
4	8	2H E 2		110	-2
5	7	1NT E 2		120	-2
7	5	1NT E 2		120	-2
8	4	1NT E-1	100		4

4

♠ A973
♥ AQJ9
♦ 962
♣ 72

♠ 854
♥ K104
♦ AK105
♣ J63

♠ KJ1062
♥ 52
♦ Q4
♣ KQ104

♠ Q
♥ 8763
♦ J873
♣ A985

Av: NS=+70

NS	EW	Contract	N-S	E-W	IMP
1	3	3S E-1	100		1
3	1	3S E-2	200		4
4	8	2S E-1	100		1
5	7	1NT W 2		120	-5
7	5	3S E-2	200		4
8	4	1NT W 2		120	-5

5

♠ 7
♥ 762
♦ K109763
♣ 632

♠ AKQ95
♥ QJ854
♦ 5
♣ 98

♠ 1086
♥ 9
♦ AJ842
♣ AKQ7

♠ J432
♥ AK103
♦ Q
♣ J1054

Av: NS=-190

NS	EW	Contract	N-S	E-W	IMP
1	3	4S W 5		450	-6
3	1	4S W-1	50		6
4	8	4S W-1	50		6
5	7	3NT W-2	100		7
7	5	4S W 4		420	-6
8	4	4S W 5		450	-6

6

♠ AJ32
♥ 83
♦ AQ97
♣ 975

♠ Q1074
♥ J5
♦ 10842
♣ 632

♠ K985
♥ AK1097
♦ K6
♣ J8

♠ 6
♥ Q642
♦ J53
♣ AKQ104

Av: NS=+130

NS	EW	Contract	N-S	E-W	IMP
1	3	3C S 4	130		0
3	1	3C S 4	130		0
4	8	3C S 3	110		-1
5	7	3C S 3	110		-1
7	5	2C S 4	130		0
8	4	3C S 4	130		0

7

♠ AK9753
♥ 97
♦ K985
♣ 7

♠ Q84
♥ J3
♦ A76
♣ AQJ32

♠ 102
♥ A85
♦ QJ42
♣ K985

♠ J6
♥ KQ10642
♦ 103
♣ 1064

Av: NS=-30

NS	EW	Contract	N-S	E-W	IMP
1	5	3S N-1		100	-2
2	4	1NT W 1		90	-2
4	2	3H S 5	200		6
5	1	2NT W 2		120	-3
6	8	4C W-2	200		6
8	6	3C W 4		130	-3

8

♠ AKJ10
♥ AQ875
♦ AQ
♣ 65

♠ 72
♥ KJ1093
♦ K93
♣ AK8

♠ Q96
♥ 64
♦ 10852
♣ QJ104

♠ 8543
♥ 2
♦ J764
♣ 9732

Av: NS=-50

NS	EW	Contract	N-S	E-W	IMP
1	5	4S S-3		150	-3
2	4	4S S-2		100	-2
4	2	4S S-2		100	-2
5	1	4S S-1		50	0
6	8	2H W-1	50		3
8	6	3Hx W-2	300		8

9

♠ 43
♥ A72
♦ 965
♣ A6543

♠ J10986
♥ K96
♦ 7
♣ J872

♠ KQ752
♥
♦ AQ1032
♣ KQ9

♠ A
♥ QJ108543
♦ KJ84
♣ 10

Av: NS=-650

NS	EW	Contract	N-S	E-W	IMP
1	5	5S E 5		650	0
2	4	4S E 5		650	0
4	2	5S E 5		650	0
5	1	4S E 5		650	0
6	8	5S E 5		650	0
8	6	5H S 5	450		15

10

♠ J2
♥ AKJ865
♦ A
♣ AQ109

♠ K1094
♥ Q10
♦ J10832
♣ 72

♠ Q753
♥ 92
♦ K764
♣ J83

♠ A86
♥ 743
♦ Q95
♣ K654

Av: NS=+690

NS	EW	Contract	N-S	E-W	IMP
1	5	6H N 6	1430		12
2	4	4H N 7	710		1
4	2	4H N 6	680		0
5	1	4H N 6	680		0
6	8	4H N 6	680		0
8	6	4H N 6	680		0

11

♠ 654
♥ AKJ74
♦ 962
♣ A9

♠ Q872
♥ 103
♦ Q53
♣ 10643

♠ 93
♥ Q52
♦ KJ84
♣ Q852

♠ AKJ10
♥ 986
♦ A107
♣ KJ7

Av: NS=+430

NS	EW	Contract	N-S	E-W	IMP
1	5	4H S 5	450		1
2	4	4H N 4	420		0
4	2	4H S 5	450		1
5	1	4H S 4	420		0
6	8	4H S-1		50	-10
8	6	4H S 4	420		0

12

♠ A8
♥ AJ9852
♦ AK10
♣ K4

♠ J72
♥ K63
♦ J8
♣ A9753

♠ 109
♥ Q104
♦ Q6543
♣ Q82

♠ KQ6543
♥ 7
♦ 972
♣ J106

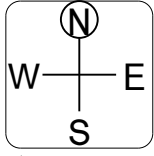
Av: NS=+640

NS	EW	Contract	N-S	E-W	IMP
1	5	4S S 4	620		-1
2	4	4S S 4	620		-1
4	2	3NT N 5	660		1
5	1	4S S-1		100	-12
6	8	3NT N 5	660		1
8	6	4S S 7	710		2

13

♠ Q5432
♥ KJ10
♦ J8
♣ 642

♠ K98
♥ Q932
♦ 10
♣ AK1053



♠ J76
♥ 6
♦ AK9753
♣ J97

♠ A10
♥ A8754
♦ Q642
♣ Q8

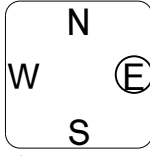
Av: NS=-120

NS	EW	Contract	N-S	E-W	IMP
1	7	4C W 4		130	0
2	6	3C W 4		130	0
3	5	2D E 2		90	1
5	3	3C W 4		130	0
6	2	3H S-3		300	-5
7	1	4C W-1	100		6

14

♠ KQJ
♥ K73
♦ 10653
♣ Q86

♠ 82
♥ 84
♦ AQ8
♣ AK7432



♠ 10964
♥ J10962
♦ 42
♣ 105

♠ A753
♥ AQ5
♦ KJ97
♣ J9

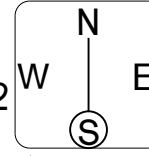
Av: NS=+40

NS	EW	Contract	N-S	E-W	IMP
1	7	3NT S 3	400		8
2	6	3NT S-1		50	-3
3	5	3NT S-1		50	-3
5	3	3NT S-3		150	-5
6	2	3NT S-3		150	-5
7	1	3NT S 3	400		8

15

♠ A84
♥ 1042
♦ A54
♣ Q752

♠ Q9
♥ 765
♦ K9762
♣ AJ3



♠ J106532
♥ AJ9
♦ Q
♣ K86

♠ K7
♥ KQ83
♦ J1083
♣ 1094

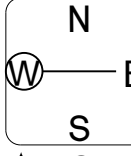
Av: NS=-90

NS	EW	Contract	N-S	E-W	IMP
1	7	Passout			3
2	6	2S E-1	50		4
3	5	2S E 2		110	-1
5	3	2S E 3		140	-2
6	2	3S E 3		140	-2
7	1	2S E 2		110	-1

16

♠ 1073
♥ Q3
♦ AJ94
♣ J543

♠ J54
♥ KJ10865
♦ K
♣ K102



♠ K982
♥ A2
♦ Q852
♣ AQ6

♠ AQ6
♥ 974
♦ 10763
♣ 987

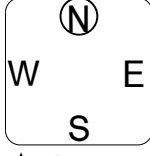
Av: NS=-140

NS	EW	Contract	N-S	E-W	IMP
1	7	4H W-1	100		6
2	6	3NT E-2	200		8
3	5	4H W 4		620	-10
5	3	3NT E-1	100		6
6	2	3NT E 3		600	-10
7	1	3H W 3		140	0

17

♠ 643
♥ 3
♦ QJ94
♣ K8753

♠ Q98
♥ QJ85
♦ AK107
♣ J10



♠ AK10
♥ 962
♦ 532
♣ Q962

♠ J752
♥ AK1074
♦ 86
♣ A4

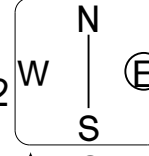
Av: NS=-80

NS	EW	Contract	N-S	E-W	IMP
1	7	1NT N-2		100	-1
2	6	2C S-2		100	-1
3	5	2S N-1		50	1
5	3	2C S-2		100	-1
6	2	1NT N 1	90		5
7	1	1H S-1		50	1

18

♠ 10
♥ K1083
♦ KQ964
♣ K108

♠ A92
♥ A654
♦ 10852
♣ Q3



♠ J43
♥ Q97
♦ AJ3
♣ A972

♠ KQ8765
♥ J2
♦ 7
♣ J654

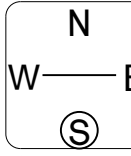
Av: NS=+50

NS	EW	Contract	N-S	E-W	IMP
1	7	2NT E-2	100		2
2	6	2NT E-1	50		0
3	5	2NT E-3	150		3
5	3	1NT E 1		90	-4
6	2	4H W-4	200		4
7	1	2S S-1		100	-4

19

♠ 76
♥ K763
♦ AK5
♣ KQJ5

♠ KJ98
♥ QJ109
♦ 6
♣ A632



♠ 10432
♥ 854
♦ Q1098
♣ 107

♠ AQ5
♥ A2
♦ J7432
♣ 984

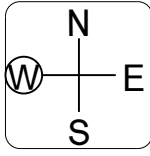
Av: NS=+180

NS	EW	Contract	N-S	E-W	IMP
2	8	3NT N 3	400		6
3	7	3NT N 3	400		6
4	6	3NT N-1		50	-6
6	4	3NT N-1		50	-6
7	3	3NT N-1		50	-6
8	2	3NT N 4	430		6

20

♠ Q65
♥ K10632
♦ 743
♣ 82

♠ 10932
♥ 975
♦ J96
♣ A105



♠ K8
♥ AQJ
♦ K52
♣ KJ964

♠ AJ74
♥ 84
♦ AQ108
♣ Q73

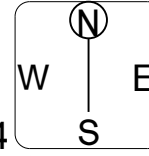
Av: NS=-110

NS	EW	Contract	N-S	E-W	IMP
2	8	1NT E 3		150	-1
3	7	1NT E 2		120	0
4	6	1NT E 1		90	1
6	4	1NT E 4		180	-2
7	3	1NT E 1		90	1
8	2	1NT E 1		90	1

21

♠ Q765
♥ K7
♦ QJ
♣ QJ972

♠ 43
♥ AQ4
♦ K832
♣ K1084



♠ AKJ108
♥ J105
♦ 764
♣ 63

♠ 92
♥ 98632
♦ A1095
♣ A5

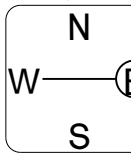
Av: NS=-130

NS	EW	Contract	N-S	E-W	IMP
2	8	2S E 4		170	-1
3	7	1NT W 1		90	1
4	6	2NT W 4		180	-2
6	4	1NT W 1		90	1
7	3	2S E 2		110	1
8	2	1NT W 3		150	-1

22

♠ K7
♥ 83
♦ AQ97
♣ QJ1043

♠ 108642
♥ QJ62
♦ KJ4
♣ 6



♠ A9
♥ 10975
♦ 1053
♣ A975

♠ QJ53
♥ AK4
♦ 862
♣ K82

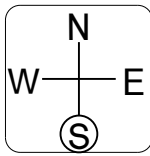
Av: NS=+430

NS	EW	Contract	N-S	E-W	IMP
2	8	3NT N 5	460		1
3	7	3NT S 4	430		0
4	6	3NT N 5	460		1
6	4	3NT S 4	430		0
7	3	3NT S 3	400		-1
8	2	3NT N 3	400		-1

23

♠ KQ92
♥ 1096
♦ J74
♣ K82

♠ A63
♥ 8754
♦ K2
♣ A975



♠ J74
♥ QJ2
♦ Q9863
♣ J3

♠ 1085
♥ AK3
♦ A105
♣ Q1064

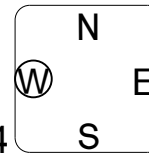
Av: NS=+120

NS	EW	Contract	N-S	E-W	IMP
2	8	1NT N 2	120		0
3	7	1NT S 3	150		1
4	6	1NT S 2	120		0
6	4	1NT S 2	120		0
7	3	1NT S-2		200	-8
8	2	1NT S 2	120		0

24

♠ Q652
♥ K
♦ A985
♣ 9762

♠ A
♥ J5432
♦ K6
♣ AQJ54



♠ KJ1084
♥ 7
♦ QJ742
♣ 83

♠ 973
♥ AQ10986
♦ 103
♣ K10

Av: NS=-70

NS	EW	Contract	N-S	E-W	IMP
2	8	2S E 2		110	-1
3	7	3NT W-4	200		7
4	6	3NT E 3		400	-8
6	4	1NT W 1		90	-1
7	3	2C W-1	50		3
8	2	2NT W 2		120	-2