

**1**

♠ AKJ7  
♥ Q10  
♦ 73  
♣ QJ953

♠ Q984  
♥ K98  
♦ KJ52  
♣ 76

♠ 105  
♥ A752  
♦ AQ98  
♣ A108

♠ 632  
♥ J643  
♦ 1064  
♣ K42

NS	EW	Contract	N-S	E-W	IMP
2	4	1C N 2	90		2
3	5	1C N 1	70		0
6	1	4H E-1	50		-2

**2**

♠ KQJ1074  
♥ K42  
♦ QJ92  
♣

♠ 6  
♥ J853  
♦ A1075  
♣ AK98

♠ A82  
♥ AQ  
♦ 864  
♣ Q7643

♠ 953  
♥ 10976  
♦ K3  
♣ J1052

NS	EW	Contract	N-S	E-W	IMP
2	4	3S N 3	140		14
3	5	3NT E-1	50		7
6	1	3NT E 3		400	-21

**3**

♠ J642  
♥ Q4  
♦ Q102  
♣ K874

♠ Q87  
♥ K83  
♦ A4  
♣ AQJ103

♠ A109  
♥ J762  
♦ 75  
♣ 9652

♠ K53  
♥ A1095  
♦ KJ9863  
♣

NS	EW	Contract	N-S	E-W	IMP
2	4	3D S 4	130		7
3	5	2D S 3	110		4
6	1	1NT W 1		90	-11

**4**

♠ 1072  
♥ Q8  
♦ AQJ874  
♣ 93

♠ KQ64  
♥ 653  
♦ K2  
♣ K854

♠ J983  
♥ J94  
♦ 1053  
♣ Q107

♠ A5  
♥ AK1072  
♦ 96  
♣ AJ62

NS	EW	Contract	N-S	E-W	IMP
2	4	3H S 4	170		-21
3	5	3NT N 6	690		13
6	1	4H S 4	620		8

**5**

♠ AK8  
♥ K4  
♦ A983  
♣ J1072

♠ J105  
♥ AQ96  
♦ KJ104  
♣ 98

♠ Q62  
♥ J83  
♦ Q76  
♣ AQ53

♠ 9743  
♥ 10752  
♦ 52  
♣ K64

NS	EW	Contract	N-S	E-W	IMP
3	4	1NT N 1	90		0
5	1	1NT N 1	90		0
6	2	1NT N 1	90		0

**6**

♠ K102  
♥ 865  
♦ QJ53  
♣ K108

♠ J986  
♥ AJ97  
♦ 7  
♣ J642

♠ AQ543  
♥ K42  
♦ 964  
♣ A7

♠ 7  
♥ Q103  
♦ AK1082  
♣ Q953

NS	EW	Contract	N-S	E-W	IMP
3	4	3D S-1		50	14
5	1	5Dx S-3		500	-17
6	2	5D S-4		200	3

**7**

♠ 10752  
♥ K10  
♦ A973  
♣ K104

♠ KJ  
♥ A7652  
♦ Q85  
♣ 862

♠ Q64  
♥ Q98  
♦ J104  
♣ AJ97

♠ A983  
♥ J43  
♦ K62  
♣ Q53

NS	EW	Contract	N-S	E-W	IMP
3	4	Passout			0
5	1	Passout			0
6	2	Passout			0

**8**

♠ J432  
♥ A83  
♦ 953  
♣ K53

♠ A9865  
♥ 9  
♦ AKQ6  
♣ J109

♠ K7  
♥ K1052  
♦ J10874  
♣ 87

♠ Q10  
♥ QJ764  
♦ 2  
♣ AQ642

NS	EW	Contract	N-S	E-W	IMP
3	4	3NT E 4		430	-15
5	1	2S W 2		110	9
6	2	3D W 5		150	6

**9**

♠ AJ92  
♥ A5  
♦ A972  
♣ 1053

♠ 83  
♥ J93  
♦ QJ84  
♣ QJ97

♠ KQ  
♥ K1072  
♦ K105  
♣ AK84

♠ 107654  
♥ Q864  
♦ 63  
♣ 62

NS	EW	Contract	N-S	E-W	IMP
1	2	3NT E-2	200		21
4	5	3NT E 4		630	-24
6	3	1NT E 2		120	3

**10**

♠ 6  
♥ K73  
♦ A4  
♣ AKQ9854

♠ 1054  
♥ 964  
♦ 109832  
♣ 107

♠ QJ9873  
♥ AJ1082  
♦ K7  
♣

♠ AK2  
♥ Q5  
♦ QJ65  
♣ J632

NS	EW	Contract	N-S	E-W	IMP
1	2	3NT S 5	660		12
4	5	4C N 6	170		-20
6	3	5C N 5	600		8

**11**

♠ K10532  
♥  
♦ A853  
♣ A1098

♠  
♥ A1098754  
♦ 42  
♣ Q642

♠ A74  
♥ J6  
♦ KQJ96  
♣ K73

♠ QJ986  
♥ KQ32  
♦ 107  
♣ J5

NS	EW	Contract	N-S	E-W	IMP
1	2	5Hx W-2	300		1
4	5	5Hx W-1	100		-13
6	3	4S S 5	450		12

**12**

♠ KQ  
♥ KJ9  
♦ AKJ765  
♣ A4

♠ 876  
♥ Q83  
♦ 843  
♣ 8752

♠ J1094  
♥ 754  
♦ Q1092  
♣ J10

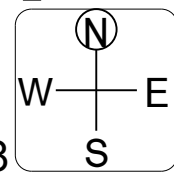
♠ A532  
♥ A1062  
♦  
♣ KQ963

NS	EW	Contract	N-S	E-W	IMP
1	2	3NT S 6	690		0
4	5	3NT N 7	720		3
6	3	3NT N 5	660		-3

13

♠AJ10862  
♥10532  
♦J95  
♣

♠Q974  
♥J6  
♦Q63  
♣Q1098



♠K5  
♥AQ94  
♦A1042  
♣542

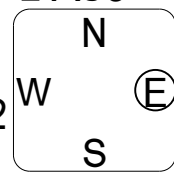
♠3  
♥K87  
♦K87  
♣AKJ763

NS	EW	Contract	N-S	E-W	IMP
1	3	3C S-2		200	-23
5	2	3C W-4	400		15
6	4	3C W-3	300		8

14

♠Q952  
♥Q7  
♦KQ63  
♣AJ9

♠A76  
♥J6  
♦10972  
♣Q543



♠K1084  
♥AK85  
♦A54  
♣76

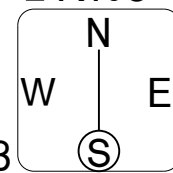
♠J3  
♥109432  
♦J8  
♣K1082

NS	EW	Contract	N-S	E-W	IMP
1	3	1NT W-1	50		1
5	2	2H S-1		50	-7
6	4	1NT W-2	100		6

15

♠AK86  
♥K5  
♦QJ84  
♣K105

♠10  
♥Q963  
♦93  
♣AQ9763



♠J52  
♥J7  
♦AK62  
♣J842

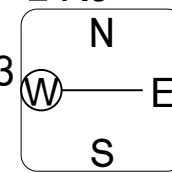
♠Q9743  
♥A10842  
♦1075  
♣

NS	EW	Contract	N-S	E-W	IMP
1	3	4S S-1		100	-24
5	2	4S N 4	620		12
6	4	4S S 4	620		12

16

♠QJ74  
♥82  
♦AQJ103  
♣K9

♠2  
♥A76543  
♦864  
♣A105



♠A9853  
♥KQJ  
♦7  
♣J743

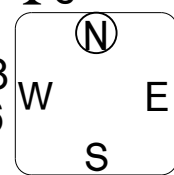
♠K106  
♥109  
♦K952  
♣Q862

NS	EW	Contract	N-S	E-W	IMP
1	3	3H W 3		140	4
5	2	4H W 4		620	-22
6	4	2D N 2	90		18

17

♠AQ987  
♥Q763  
♦A32  
♣3

♠J6  
♥KJ98  
♦J976  
♣K75



♠K1032  
♥A5  
♦K84  
♣J1094

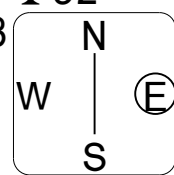
♠54  
♥1042  
♦Q105  
♣AQ862

NS	EW	Contract	N-S	E-W	IMP
2	3	2S N-1		50	2
4	1	2S N-1		50	2
6	5	2H N-2		100	-4

18

♠A10  
♥Q109843  
♦K92  
♣92

♠Q76543  
♥7  
♦AJ4  
♣764



♠82  
♥KJ5  
♦Q75  
♣AKJ85

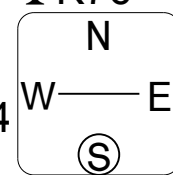
♠KJ9  
♥A62  
♦10863  
♣Q103

NS	EW	Contract	N-S	E-W	IMP
2	3	3H N-1		100	-9
4	1	2S W-1	50		2
6	5	2H N 2	110		7

19

♠J10654  
♥762  
♦J6  
♣K76

♠AQ83  
♥93  
♦Q1084  
♣AQ5



♠72  
♥K108  
♦K953  
♣J843

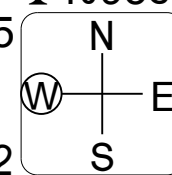
♠K9  
♥AQJ54  
♦A72  
♣1092

NS	EW	Contract	N-S	E-W	IMP
2	3	2S S-1		50	-10
4	1	3C E-2	200		9
6	5	3C E-1	100		1

20

♠Q86  
♥A96  
♦AJ2  
♣10953

♠K975  
♥KQ4  
♦83  
♣A872



♠3  
♥J532  
♦K954  
♣KQJ4

♠AJ1042  
♥1087  
♦Q1076  
♣6

NS	EW	Contract	N-S	E-W	IMP
2	3	4C W-1	100		6
4	1	3S S-3		300	-20
6	5	4C W-2	200		14