

1

♠7
♥10942
♦AKJ108542
♣

♠Q109843
♥75
♦Q
♣KQ93

♠K2
♥AKQJ6
♦9
♣J10642

♠AJ65
♥83
♦763
♣A875

W N E S

NS	EW	Contract	N-S	E-W	MP
2	4	4H E-1	50		1.5
3	7	4H E-1	50		1.5
5	6	4H E 4		420	0
8	1	4Sx W-2	300		3

2

♠AJ976
♥8
♦AJ876
♣Q2

♠3
♥AK943
♦Q1095
♣AJ9

♠Q1052
♥Q107
♦432
♣K85

♠K84
♥J652
♦K
♣107643

W N E S

NS	EW	Contract	N-S	E-W	MP
2	4	3S N-1	100		1
3	7	3S N-1	100		1
5	6	3H W-1	50		3
8	1	3S N-1	100		1

3

♠10875
♥A976
♦J53
♣A4

♠A943
♥K83
♦
♣KJ9876

♠K2
♥Q542
♦K1087
♣Q53

♠QJ6
♥J10
♦AQ9642
♣102

W N E S

NS	EW	Contract	N-S	E-W	MP
2	4	2H E 2		110	0
3	7	3D S-1	50		1
5	6	3H E-1	100		3
8	1	Passout			2

4

♠1043
♥A632
♦AK109
♣103

♠AK85
♥9
♦7542
♣AQ94

♠9762
♥Q
♦Q63
♣J8752

♠QJ
♥KJ108754
♦J8
♣K6

W N E S

NS	EW	Contract	N-S	E-W	MP
3	5	4H S 4	620		2.5
4	1	4H S 4	620		2.5
6	7	3H S 4	170		1
8	2	4H S-2		200	0

5

♠32
♥KQ753
♦3
♣K10865

♠10954
♥2
♦QJ964
♣732

♠AKJ7
♥A84
♦AK1052
♣A

♠Q86
♥J1096
♦87
♣QJ94

W N E S

NS	EW	Contract	N-S	E-W	MP
3	5	3NT E 3	400		3
4	1	4Hx N-2	500		0
6	7	5D E 6	420		2
8	2	4S W 5	450		1

6

♠KQ1063
♥Q107
♦106
♣KJ3

♠A98
♥A862
♦43
♣9876

♠J4
♥K43
♦AKQ87
♣AQ2

♠752
♥J95
♦J952
♣1054

W N E S

NS	EW	Contract	N-S	E-W	MP
3	5	3NT E 3		600	1
4	1	3NT W 4		630	0
6	7	3NT E-3	300		3
8	2	3D E 3		110	2

7

♠10
♥KQJ103
♦974
♣AKJ6

♠983
♥A962
♦K106
♣1097

♠AJ74
♥85
♦832
♣8432

♠KQ652
♥74
♦AQJ5
♣Q5

W N E S

NS	EW	Contract	N-S	E-W	MP
4	6	4H N 4	620		0
5	2	3NT N 4	630		2
7	1	3NT N 4	630		2
8	3	3NT N 4	630		2

8

♠KQJ5
♥
♦KQ7
♣AJ10832

♠1096
♥Q109642
♦963
♣Q

♠87432
♥A3
♦A10542
♣K

♠A
♥KJ875
♦J8
♣97654

W N E S

NS	EW	Contract	N-S	E-W	MP
4	6	3NT N 5	460		3
5	2	2C N 7	190		0
7	1	5C N 6	420		1.5
8	3	5C N 6	420		1.5

9

♠Q4
♥K4
♦Q7653
♣A742

♠10752
♥J95
♦J8
♣10853

♠J96
♥A83
♦A92
♣KQJ9

♠AK83
♥Q10762
♦K104
♣6

W N E S

NS	EW	Contract	N-S	E-W	MP
4	6	1NT E-1	100		0.5
5	2	1NT E-2	200		2.5
7	1	1NT E-2	200		2.5
8	3	1NT E-1	100		0.5

10

♠84
♥K2
♦AJ94
♣AJ1064

♠KQ965
♥A763
♦752
♣8

♠J732
♥9
♦KQ1063
♣953

♠A10
♥QJ10854
♦8
♣KQ72

W N E S

NS	EW	Contract	N-S	E-W	MP
1	2	4H S 6	680		2.5
5	7	4H S 5	650		0.5
6	3	4H S 5	650		0.5
8	4	4H S 6	680		2.5

11

♠AJ984
♥872
♦K2
♣K98

♠75
♥J109543
♦J86
♣J10

♠AK
♥Q109743
♣Q7542

♠KQ10632
♥Q6
♦A5
♣A63

W N E S

NS	EW	Contract	N-S	E-W	MP
1	2	4S S 4	420		2
5	7	6S S-2	100		0
6	3	4S N 4	420		2
8	4	4S S 4	420		2

12

♠Q3
♥AQJ9872
♦4
♣KJ7

♠AK54
♥103
♦KJ9832
♣5

♠1072
♥K64
♦AQ
♣Q9832

♠J986
♥5
♦10765
♣A1064

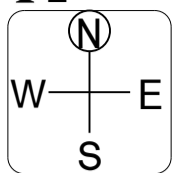
W N E S

NS	EW	Contract	N-S	E-W	MP
1	2	2H N-1	100		2.5
5	7	2NT E 4	180		1
6	3	4H N-1	100		2.5
8	4	3NT E 3	400		0

13

♠K752
♥K98543
♦105
♣2

♠Q63 ♠AJ1094
♥102 ♥AQ
♦9832 ♦AQ
♣KJ105 ♣A986



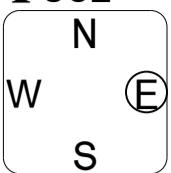
♠8
♥J76
♦KJ764
♣Q743

NS	EW	Contract	N-S	E-W	MP
2	3	3NT E 5		660	1.5
6	1	3NT E 6		690	0
7	4	3NT E 5		660	1.5
8	5	4S E 5		650	3

14

♠Q5
♥K1084
♦A874
♣J32

♠873 ♠K6
♥J753 ♥A62
♦KQJ1093 ♦52
♣ ♣AKQ1084



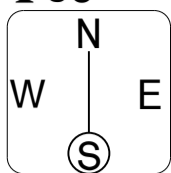
♠AJ10942
♥Q9
♦6
♣9765

NS	EW	Contract	N-S	E-W	MP
2	3	5C E 5		400	0.5
6	1	3NT E-3 150			3
7	4	3NT E 3		400	0.5
8	5	3D W 3		110	2

15

♠1074
♥J7
♦Q109752
♣J8

♠QJ9 ♠K83
♥A1062 ♥K953
♦AKJ ♦84
♣KQ3 ♣A542



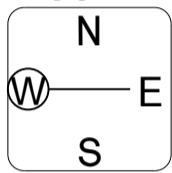
♠A652
♥Q84
♦63
♣10976

NS	EW	Contract	N-S	E-W	MP
2	3	4H W 5		450	1.5
6	1	5H W 6		480	0
7	4	4H W 5		450	1.5
8	5	6H W-2 100			3

16

♠J1042
♥Q73
♦KQ6
♣953

♠A963 ♠875
♥AJ95 ♥K1086
♦A84 ♦J32
♣64 ♣AQ7



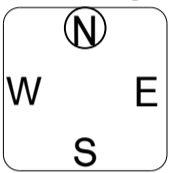
♠KQ
♥42
♦10975
♣KJ1082

NS	EW	Contract	N-S	E-W	MP
1	5	3H E-1 100			0.5
3	4	4H E-3 300			2.5
7	2	2H E-1 100			0.5
8	6	4H E-3 300			2.5

17

♠KQ106
♥105432
♦
♣AK76

♠743 ♠J95
♥AKJ ♥Q98
♦KJ762 ♦9
♣J5 ♣Q109842



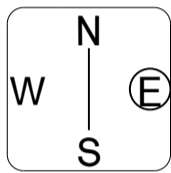
♠A82
♥76
♦AQ108543
♣3

NS	EW	Contract	N-S	E-W	MP
1	5	2Dx W-3 500			3
3	4	3H N 3 140			1.5
7	2	2H N 3 140			1.5
8	6	2NT S-1 50			0

18

♠Q10
♥AKQJ95
♦J98
♣J10

♠K832 ♠AJ965
♥62 ♥8743
♦K5 ♦Q64
♣KQ852 ♣4



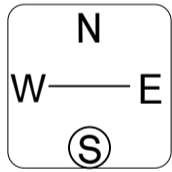
♠74
♥10
♦A10732
♣A9763

NS	EW	Contract	N-S	E-W	MP
1	5	3H N-1 100			2
3	4	4S E-1 50			3
7	2	3S E 3 140			0.5
8	6	2S E 3 140			0.5

19

♠10863
♥Q5432
♦J93
♣6

♠Q7 ♠AJ92
♥J10986 ♥
♦K7 ♦52
♣J853 ♣AKQ10972



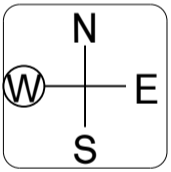
♠K54
♥AK7
♦AQ10864
♣4

NS	EW	Contract	N-S	E-W	MP
1	3	4C E 5 150			2
2	6	5C E 5 600			0
4	5	5D S-4 200			1
8	7	5D S-2 100			3

20

♠Q10
♥J8
♦QJ10852
♣A105

♠J976 ♠AK853
♥10642 ♥KQ
♦A63 ♦K4
♣K9 ♣7643



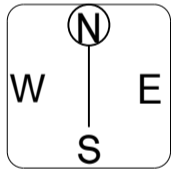
♠42
♥A9753
♦97
♣QJ82

NS	EW	Contract	N-S	E-W	MP
1	3	4S E-1 100			3
2	6	4S E 4 620			0.5
4	5	3D N-1 100			2
8	7	4S E 4 620			0.5

21

♠93
♥J6
♦AQ108
♣AQ754

♠AJ854 ♠KQ10762
♥A8 ♥1073
♦943 ♦2
♣K93 ♣1082



♠
♥KQ9542
♦KJ765
♣J6

NS	EW	Contract	N-S	E-W	MP
1	3	5H S-1 100			0
2	6	4D S 4 130			1
4	5	5C N 5 600			2.5
8	7	5D S 5 600			2.5