

1

♠AQ865
♥Q6
♦J954
♣74

♠1074
♥A82
♦8732
♣AJ3

♠J9
♥J1054
♦A106
♣10986

♠K32
♥K973
♦KQ
♣KQ52

NS	EW	Contract	N-S	E-W	MP
1	7	4S	S 4	420	1.5
2	9	4S	S 4	420	1.5
4	8	4S	S 4	420	1.5
5	3	3NT	S 4	430	4
10	6	4S	S 4	420	1.5

2

♠1064
♥K9862
♦1092
♣Q7

♠KQ
♥Q3
♦AQJ876
♣983

♠A32
♥A754
♦43
♣AKJ2

♠J9875
♥J10
♦K5
♣10654

NS	EW	Contract	N-S	E-W	MP
1	7	3NT	E 7	520	2
2	9	3NT	E 7	520	2
4	8	3NT	E 7	520	2
5	3	3NT	E 7	520	2
10	6	3NT	E 7	520	2

3

♠J109652
♥K
♦AK52
♣K6

♠A874
♥Q975
♦J843
♣7

♠KQ
♥10862
♦96
♣J9853

♠3
♥AJ43
♦Q107
♣AQ1042

NS	EW	Contract	N-S	E-W	MP
1	7	3NT	S 3	400	3
2	9	4S	N-1	50	1
4	8	2NT	S-1	50	1
5	3	3NT	N 5	460	4
10	6	4S	N-1	50	1

4

♠A6
♥Q54
♦KJ9862
♣Q6

♠109753
♥AJ
♦107
♣J1072

♠K82
♥K93
♦53
♣AK985

♠QJ4
♥108762
♦AQ4
♣43

NS	EW	Contract	N-S	E-W	MP
2	1	2D	N 2	90	4
3	9	3H	S-1	100	2
6	4	3H	S-2	200	0
8	5	3H	S-1	100	2
10	7	3D	N-1	100	2

5

♠763
♥J2
♦4
♣AQJ9742

♠982
♥83
♦J975
♣K863

♠1054
♥AK654
♦AK2
♣105

♠AKQJ
♥Q1097
♦Q10863
♣

NS	EW	Contract	N-S	E-W	MP
2	1	4S	S-1	100	0.5
3	9	3H	E-3	150	2.5
6	4	3H	E-6	300	4
8	5	3H	E-3	150	2.5
10	7	3NT	S-1	100	0.5

6

♠8762
♥QJ9763
♦107
♣8

♠K10943
♥105
♦Q942
♣A7

♠Q5
♥A82
♦J86
♣K10643

♠AJ
♥K4
♦AK53
♣QJ952

NS	EW	Contract	N-S	E-W	MP
2	1	4H	N 4	420	4
3	9	3NT	S-3	150	0
6	4	3H	N 4	170	3
8	5	2D	S 2	90	1
10	7	1C	S 3	110	2

7

♠87
♥K9
♦Q9854
♣QJ43

♠Q1093
♥Q5
♦AKJ7
♣A109

♠AJ542
♥A10763
♦10
♣62

♠K6
♥J842
♦632
♣K875

NS	EW	Contract	N-S	E-W	MP
3	2	4S	E 5	650	0.5
6	8	4S	W 4	620	2.5
7	5	3NT	W 3	600	4
9	4	4S	W 5	650	0.5
10	1	4S	W 4	620	2.5

8

♠AK6
♥KJ762
♦K4
♣532

♠94
♥8
♦QJ865
♣AKQ87

♠J873
♥AQ10
♦9732
♣96

♠Q1052
♥9543
♦A10
♣J104

NS	EW	Contract	N-S	E-W	MP
3	2	3H	S-2	100	2
6	8	3D	W 3	110	1
7	5	2H	N-1	50	3.5
9	4	2H	N-1	50	3.5
10	1	3NT	E 3	400	0

9

♠1062
♥102
♦K943
♣Q653

♠KQJ873
♥AK6
♦J6
♣82

♠A4
♥QJ943
♦A752
♣KJ

♠95
♥875
♦Q108
♣A10974

NS	EW	Contract	N-S	E-W	MP
3	2	4H	E 6	680	2
6	8	4H	E 6	680	2
7	5	4H	E 6	680	2
9	4	4H	E-1	100	4
10	1	4S	E 7	710	0

10

♠5
♥K10764
♦K642
♣KJ2

♠AK
♥
♦AJ10875
♣A10974

♠J976
♥QJ985
♦93
♣65

♠Q108432
♥A32
♦Q
♣Q83

NS	EW	Contract	N-S	E-W	MP
1	6	3NT	E 4	630	0
4	3	5D	W-2	200	3
7	8	3D	W 5	150	2
9	5	5Dx	W-3	800	4
10	2	3H	N-2	200	1

11

♠J763
♥Q97
♦J65
♣532

♠AQ5
♥1084
♦73
♣AQJ64

♠1094
♥A632
♦AKQ8
♣87

♠K82
♥KJ5
♦10942
♣K109

NS	EW	Contract	N-S	E-W	MP
1	6	3NT	W 5	460	2
4	3	3NT	E 7	520	0
7	8	3NT	W 5	460	2
9	5	3NT	W 3	400	4
10	2	3NT	W 5	460	2

12

♠AQ73
♥Q3
♦3
♣1098653

♠K5
♥A107654
♦K6
♣K42

♠J10964
♥J92
♦Q875
♣A

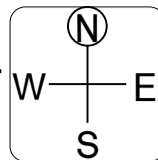
♠82
♥K8
♦AJ10942
♣QJ7

NS	EW	Contract	N-S	E-W	MP
1	6	3H	W 3	140	2
4	3	2H	W 3	140	2
7	8	3H	W 3	140	2
9	5	3H	W-1	50	4
10	2	2H	W 5	200	0

13

♠AQ103
♥A10
♦A10752
♣A6

♠J96
♥QJ9854
♦Q943
♣



♠52
♥63
♦K86
♣KQ9754

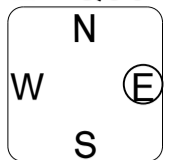
♠K874
♥K72
♦J
♣J10832

NS	EW	Contract	N-S	E-W	MP
2	7	4S	N 5	650	3
5	4	4S	N 4	620	1
8	1	3S	N 5	200	0
9	6	4S	S 5	650	3
10	3	4S	S 5	650	3

14

♠A6
♥32
♦AK542
♣KQ86

♠QJ82
♥AQ1084
♦106
♣92



♠K107
♥9765
♦87
♣AJ54

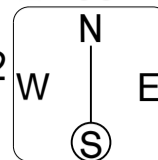
♠9543
♥KJ
♦QJ93
♣1073

NS	EW	Contract	N-S	E-W	MP
2	7	1NT	N 2	120	3
5	4	1NT	N 3	150	4
8	1	3H	W 3	140	0.5
9	6	3H	W 3	140	0.5
10	3	1NT	N 1	90	2

15

♠Q8753
♥J
♦Q42
♣7654

♠AJ10
♥A8532
♦96
♣KQ9



♠94
♥Q97
♦AKJ1083
♣AJ

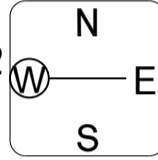
♠K62
♥K1064
♦75
♣10832

NS	EW	Contract	N-S	E-W	MP
2	7	4H	W 6	480	1
5	4	4H	W 4	420	3
8	1	4H	W 5	450	2
9	6	6H	W-1	50	4
10	3	6H	W 6	980	0

16

♠A52
♥10875
♦42
♣AQ93

♠1043
♥QJ42
♦KQ8
♣J107



♠QJ6
♥3
♦A1097653
♣52

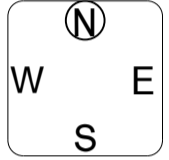
♠K987
♥AK96
♦J
♣K864

NS	EW	Contract	N-S	E-W	MP
3	1	3H	N 4	170	2
6	5	3Dx	E-1	200	3
8	2	3H	N 3	140	1
9	7	4H	N 4	420	4
10	4	4H	N-1	50	0

17

♠KJ87
♥KQ10953
♦9
♣93

♠A4
♥A62
♦AQ105
♣K854



♠106
♥874
♦KJ82
♣J1062

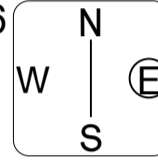
♠Q9532
♥J
♦7643
♣AQ7

NS	EW	Contract	N-S	E-W	MP
3	1	3H	N 4	170	2.5
6	5	2H	N 4	170	2.5
8	2	2NT	W-2	100	0
9	7	2H	N 4	170	2.5
10	4	2H	N 4	170	2.5

18

♠AQ3
♥J94
♦942
♣J1053

♠K876
♥1065
♦K105
♣986



♠54
♥AK2
♦AQ87
♣AK72

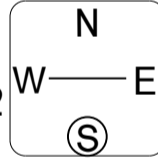
♠J1092
♥Q873
♦J63
♣Q4

NS	EW	Contract	N-S	E-W	MP
3	1	3NT	E-2	100	3.5
6	5	3NT	E-2	100	3.5
8	2	3NT	E 3	400	0
9	7	3NT	E-1	50	1.5
10	4	3NT	E-1	50	1.5

19

♠AJ53
♥Q10962
♦1075
♣7

♠106
♥AK
♦J9842
♣10852



♠9874
♥
♦AKQ
♣AKQJ96

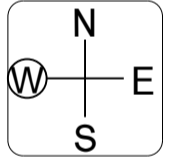
♠KQ2
♥J87543
♦63
♣43

NS	EW	Contract	N-S	E-W	MP
1	9	5D	W 6	620	3
3	8	5C	E 7	640	1.5
4	2	5C	E 5	600	4
7	6	5C	E 7	640	1.5
10	5	3NT	W 6	690	0

20

♠K854
♥84
♦KJ1095
♣92

♠76
♥KJ109753
♦Q
♣543



♠AJ3
♥A6
♦764
♣AKJ76

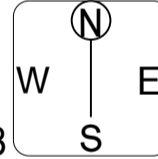
♠Q1092
♥Q2
♦A832
♣Q108

NS	EW	Contract	N-S	E-W	MP
1	9	4H	W 5	650	1
3	8	4H	W 5	650	1
4	2	4H	E 4	620	3.5
7	6	4H	W 5	650	1
10	5	4H	W 4	620	3.5

21

♠Q
♥Q974
♦AJ10854
♣KJ

♠3
♥KJ2
♦KQ7
♣A108763



♠AK95
♥10
♦632
♣Q9542

♠J1087642
♥A8653
♦9
♣

NS	EW	Contract	N-S	E-W	MP
1	9	5C	W-2	100	4
3	8	4S	S-1	100	2.5
4	2	4C	W 4	130	0.5
7	6	3S	S-1	100	2.5
10	5	3C	W 4	130	0.5