

1

♠AJ5
♥Q92
♦765
♣KJ63

♠Q82
♥J1065
♦Q1094
♣A5

♠K7643
♥A74
♦AK
♣Q94

♠109
♥K83
♦J832
♣10872

W N E S

NS	EW	Contract	N-S	E-W	MP
2	4	4S	E-2	100	3
3	7	3NT	E 3	400	1.5
5	6	3NT	E 4	430	0
8	1	Average			1.5

2

♠J102
♥A10
♦KJ863
♣KQ3

♠975
♥QJ974
♦74
♣AJ6

♠AK864
♥532
♦105
♣842

♠Q3
♥K86
♦AQ92
♣10975

W N E S

NS	EW	Contract	N-S	E-W	MP
2	4	3D	N 4	130	2.25
3	7	3D	N 3	110	0
5	6	4D	N 4	130	2.25
8	1	Average			1.5

3

♠J2
♥A108
♦AK9
♣AK854

♠Q4
♥KQ97
♦108653
♣32

♠AK93
♥65432
♦Q7
♣J6

♠108765
♥J
♦J42
♣Q1097

W N E S

NS	EW	Contract	N-S	E-W	MP
2	4	1C	N 5	150	3
3	7	1C	N 4	130	0.75
5	6	1C	N 4	130	0.75
8	1	Average			1.5

4

♠63
♥K7
♦AKJ943
♣K109

♠97
♥A8
♦765
♣Q86542

♠KQ10542
♥QJ52
♦108
♣7

♠AJ8
♥109643
♦Q2
♣AJ3

W N E S

NS	EW	Contract	N-S	E-W	MP
3	5	3NT	S 4	630	1.5
4	1	3NT	S 4	630	1.5
6	7	4H	S-2	200	0
8	2	3NT	S 5	660	3

5

♠AKQ873
♥K76
♦A10
♣54

♠J94
♥852
♦Q642
♣AK7

♠2
♥943
♦KJ95
♣QJ632

♠1065
♥AQJ10
♦873
♣1098

W N E S

NS	EW	Contract	N-S	E-W	MP
3	5	3S	N 5	200	1
4	1	3S	N 4	170	0
6	7	4S	N 5	650	2.5
8	2	4S	N 5	650	2.5

6

♠QJ83
♥A832
♦J7652
♣

♠4
♥KQ954
♦Q43
♣K753

♠K10965
♥J76
♦K10
♣1086

♠A72
♥10
♦A98
♣AQJ942

W N E S

NS	EW	Contract	N-S	E-W	MP
3	5	3S	N-1	50	1
4	1	3D	N 3	110	3
6	7	3NT	N-1	50	1
8	2	3C	S-1	50	1

7

♠K109753
♥Q10
♦A
♣A984

♠J
♥9762
♦1054
♣QJ1065

♠AQ4
♥AJ84
♦QJ92
♣32

♠862
♥K53
♦K8763
♣K7

W N E S

NS	EW	Contract	N-S	E-W	MP
4	6	4S	N-1	100	0
5	2	2S	N 4	170	1.5
7	1	2S	N 4	170	1.5
8	3	4S	N 4	620	3

8

♠J7
♥K763
♦92
♣AJ875

♠Q32
♥1095
♦AJ1043
♣109

♠K85
♥AQJ
♦Q865
♣KQ3

♠A10964
♥842
♦K7
♣642

W N E S

NS	EW	Contract	N-S	E-W	MP
4	6	1NT	E 5	210	0.5
5	2	1NT	E 4	180	2
7	1	1NT	E 5	210	0.5
8	3	1NT	E 2	120	3

9

♠65
♥A4
♦AQJ92
♣J872

♠AK87
♥10953
♦K
♣Q1064

♠9432
♥76
♦1073
♣AK95

♠QJ10
♥KQJ82
♦8654
♣3

W N E S

NS	EW	Contract	N-S	E-W	MP
4	6	3D	N 4	130	1
5	2	2D	N 4	130	1
7	1	2D	N 5	150	3
8	3	3D	N 4	130	1

10

♠KJ52
♥Q109873
♦
♣J64

♠109873
♥4
♦AKJ1093
♣8

♠64
♥J65
♦Q862
♣KQ105

♠AQ
♥AK2
♦754
♣A9732

W N E S

NS	EW	Contract	N-S	E-W	MP
1	2	4H	S 5	650	1
5	7	4H	S 6	680	3
6	3	4H	N 5	650	1
8	4	4H	S 5	650	1

11

♠10
♥A106
♦Q8654
♣6432

♠K642
♥K94
♦102
♣KQ98

♠AQJ73
♥J8
♦AKJ7
♣107

♠985
♥Q7532
♦93
♣AJ5

W N E S

NS	EW	Contract	N-S	E-W	MP
1	2	4S	E 6	480	0
5	7	4S	E-1	50	3
6	3	4S	E 5	450	1.5
8	4	4S	E 5	450	1.5

12

♠K743
♥10954
♦Q5
♣A82

♠Q1095
♥AQ72
♦J107
♣QJ

♠J862
♥8
♦K43
♣K9764

♠A
♥KJ63
♦A9862
♣1053

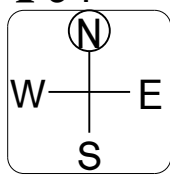
W N E S

NS	EW	Contract	N-S	E-W	MP
1	2	2S	E 2	110	1.5
5	7	3H	N-3	300	0
6	3	2S	E 2	110	1.5
8	4	2S	E-1	50	3

13

♠AQJ853
♥A1096
♦K
♣94

♠K107
♥KJ75
♦10832
♣J5



♠92
♥Q832
♦J74
♣10832

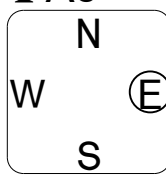
♠64
♥4
♦AQ965
♣AKQ76

NS	EW	Contract	N-S	E-W	MP
2	3	4S	N 6	680	1.5
6	1	4S	N 6	680	1.5
7	4	4S	N 4	620	0
8	5	6S	N 6	1430	3

14

♠J9763
♥AK94
♦AJ
♣A3

♠AK2
♥Q103
♦K752
♣KQ6



♠1054
♥65
♦Q863
♣J975

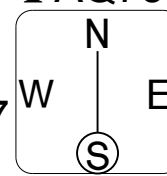
♠Q8
♥J872
♦1094
♣10842

NS	EW	Contract	N-S	E-W	MP
2	3	1NT	W 1	90	0
6	1	1NT	W-1	50	1
7	4	1NTxW-1	100		2
8	5	2H	S 2	110	3

15

♠A64
♥AK8
♦KJ6
♣AQ75

♠Q32
♥943
♦AQ87
♣J106



♠10975
♥Q76
♦1032
♣832

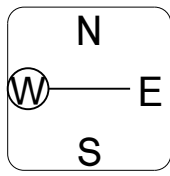
♠KJ8
♥J1052
♦954
♣K94

NS	EW	Contract	N-S	E-W	MP
2	3	3NT	N 5	660	3
6	1	3NT	N 3	600	0.5
7	4	3NT	N 3	600	0.5
8	5	3NT	N 4	630	2

16

♠K65
♥KJ94
♦52
♣K652

♠Q10
♥863
♦KQ108
♣AJ83



♠7432
♥Q102
♦J73
♣Q97

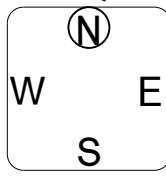
♠AJ98
♥A75
♦A964
♣104

NS	EW	Contract	N-S	E-W	MP
1	5	2NT	S 2	120	2
3	4	3NT	S-2	100	0
7	2	2H	N-1	50	1
8	6	2H	S 3	140	3

17

♠AQ95
♥QJ54
♦
♣KQ973

♠KJ104
♥AK10
♦A76
♣A82



♠832
♥763
♦K9852
♣106

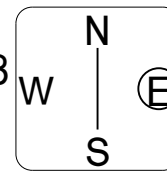
♠76
♥982
♦QJ1043
♣J54

NS	EW	Contract	N-S	E-W	MP
1	5	2NT	W-1	50	2
3	4	1NT	W 1	90	0.5
7	2	1NT	W 1	90	0.5
8	6	2NT	W-2	100	3

18

♠KQ962
♥5
♦J107
♣K764

♠10
♥KQJ98643
♦Q4
♣53



♠J8754
♥A7
♦K96
♣Q82

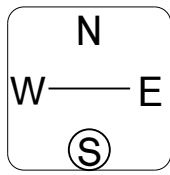
♠A3
♥102
♦A8532
♣AJ109

NS	EW	Contract	N-S	E-W	MP
1	5	4S	N-1	100	1.5
3	4	4H	W-1	50	3
7	2	3S	N-1	100	1.5
8	6	6D	S-2	200	0

19

♠K762
♥Q7
♦AQ1098
♣63

♠J3
♥K932
♦K3
♣KJ542



♠10
♥A1054
♦7654
♣Q987

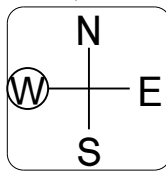
♠AQ9854
♥J86
♦J2
♣A10

NS	EW	Contract	N-S	E-W	MP
1	3	4S	S 6	480	2
2	6	4S	S 6	480	2
4	5	4S	S 6	480	2
8	7	4S	S 5	450	0

20

♠K832
♥9872
♦QJ95
♣Q

♠J6
♥AK643
♦A6
♣A1062



♠A109754
♥Q
♦K1084
♣J4

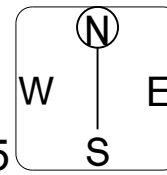
♠Q
♥J105
♦732
♣K98753

NS	EW	Contract	N-S	E-W	MP
1	3	4S	E-1	100	3
2	6	4S	E 5	650	0.5
4	5	3NT	W 3	600	2
8	7	4S	E 5	650	0.5

21

♠876
♥J1087432
♦7
♣92

♠Q943
♥5
♦AJ85
♣J1085



♠AJ102
♥A6
♦K1092
♣K73

♠K5
♥KQ9
♦Q643
♣AQ64

NS	EW	Contract	N-S	E-W	MP
1	3	3S	E 4	170	0.5
2	6	3S	E 4	170	0.5
4	5	4S	E-2	100	3
8	7	3S	E 3	140	2